

digicard

User instruction manual



DigiConnect Windows® Software - V3.00 onwards

Minimum Recommended PC Specification

Processor: Intel P4 1.4GHz, AMD Athlon 1.4 GHz

Memory: 512Mbytes

Hard disk: 40 Gbytes

Video Resolution: 1024 x 768

Operating Systems: Windows XP SP2 / Vista SP1/ Windows 7


In order to load the supplied software you must have a CD or DVD Drive. In order to connect the digiCard to your PC you must have an available USB connection.

Important: do not connect the digicard before commencing the software installation.

Installing the DigiConnect Windows® Software

1. Insert the CD provided into your optical disk drive. It will run automatically and a dialog box will appear. If the auto-run feature is disabled on your system the program will fail to load automatically. Please browse to the disk using Windows® Explorer and double-click Setup.exe.
2. If you have a multilingual version of digiconnect you will now be prompted for your language. Please select from the list and then click 'Next'.
3. You will receive a welcome message, simply click 'next'.
4. Read the terms of the Licence Agreement then click on the 'I accept the terms in the Licence agreement' option and then click 'next'. If you choose to not accept the terms the installation will be terminated.
5. Choose the folder in which you wish the software program files to be installed. The default folder is the standard location for Windows® programs. Click 'next'.
6. Click 'Install' to begin the actual installation. This may take several minutes.
7. Finally leave the box labelled 'Launch DigiConnect' ticked and click 'Finish'.
8. If you opted to launch DigiConnect at the end of the installation then you will be taken to the main options menu to configure your individual settings. When the Options menu has loaded, proceed to the Connecting and Configuration.

Connecting and configuring the digicard

1. Connect the digicard to a free USB port on your PC.
2. Wait for Windows to locate and install the appropriate drivers and confirm that the hardware is ready to use.
3. Right Click the  icon in your desktop system tray bottom right of your screen and select Options.
3. Your card reader will appear in the Card Reader list (Fig 1). If you are using a digicard device, you can use the "Flash reader LED" function to identify the device. This feature will not work with other card reading devices.

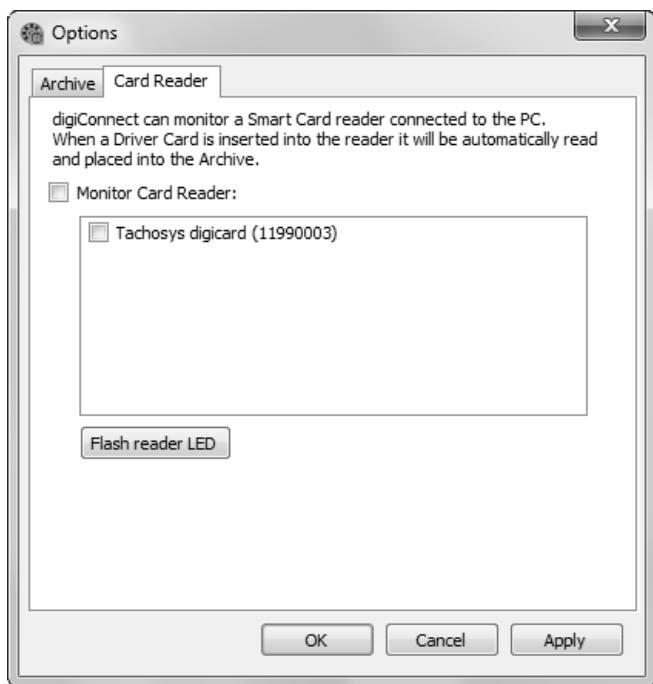


Fig 1.

4. Check the "Monitor card reader:" option to enable DigiConnect to constantly monitor your chosen reader(s) and download card information to your chosen directory whenever a card is inserted.
5. You can then choose one or more card reading devices by ticking the box next to the device.
6. Click "Apply" and then "OK" to complete the configuration.

DigiConnect - Archiving

When installed, DigiConnect will automatically create and use a directory for use as your Archive folder. This is the single location that DigiConnect will store all the files that it downloads from driver cards or vehicles.

This directory can be altered, as well as the naming convention that the files will use.

To edit these settings, open the DigiConnect options window as per Page 5 and go to the "Archive" tab (Fig 2). Select the desired naming convention from the drop down box and use the browse button at the end of "Archive folder location" to browse and select a new location to store your downloaded files.

Note: Card readers are not effected by other settings on this page. When a card reader is being monitored, the files are always automatically downloaded to the archive folder.

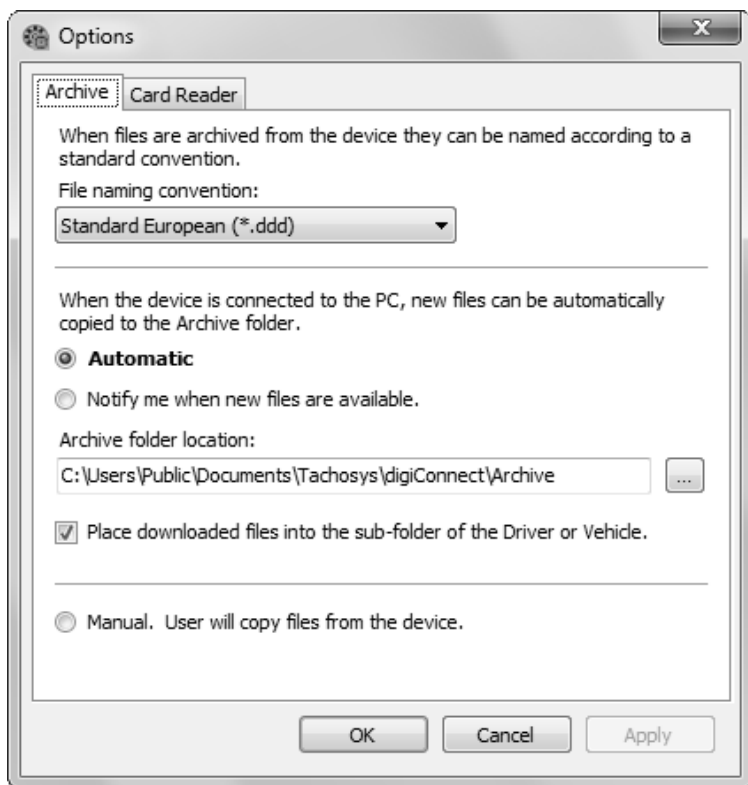


Fig 2.

DigiConnect - DigiCentral Configuration

If you plan to use a digiCentral server, you can configure DigiConnect to automatically upload files that it reads from your devices. To configure these settings, right click on the DigiConnect icon in the task bar and select “digiCentral Settings”. (Fig 3)

To enable automatic uploading, tick the “Enable sending to digiCentral” box and provide the Hostname and Port number given to you by your server provider. If you use a proxy server, you will also need to check the appropriate box and enter its details.

Test the connection and click “Apply” then “OK” to complete this configuration.

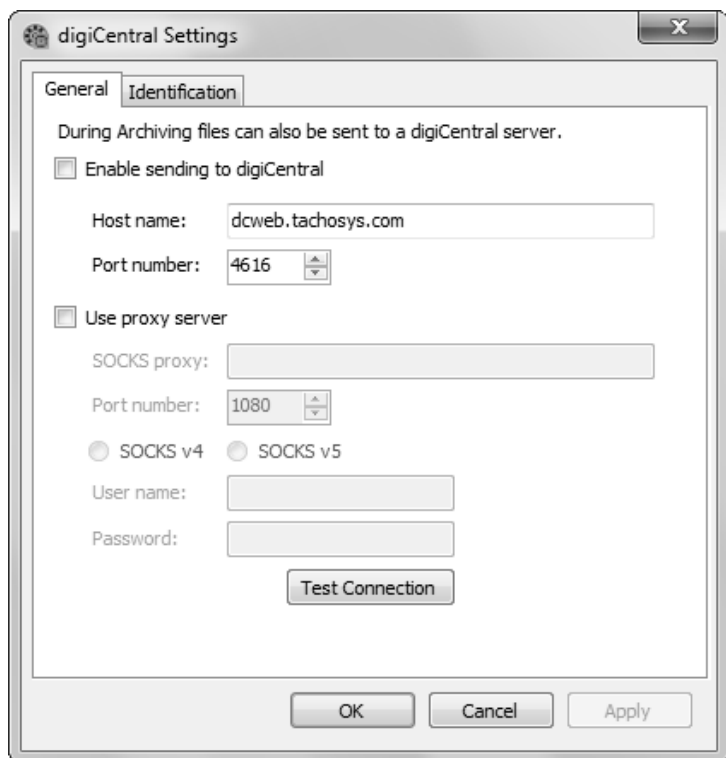


Fig 3.

Using card readers from other manufacturers

Enabling card reader monitoring will prevent other programs using your card reader. The card reader will be dedicated to reading cards for DigiConnect only. Monitoring can be temporarily disabled in order to briefly use the reader for another purpose, but care must be taken to re-enable monitoring and ensure that the device remains ticked in the Card Reader options.

digicard

TACHO·SYS

ALBION HOUSE
48 ALBERT ROAD NORTH
REIGATE, SURREY, RH2 9EL
UNITED KINGDOM

PHONE: +44 (0) 208 687 3900

FAX: +44 (0) 208 687 3919

E-MAIL: INFO@TACHOSYS.COM

COPYRIGHT © PROSYS DEVELOPMENT SERVICES 2012

